

MANUFACTURED BY.:

Sumangal Castings Private Limited (Lock Division)
Survey No. 154, SIDC Road,
Veraval (Shapar), Gondal N/H 8-B,
Ta: Kotda Sangani,
Dist.: Rajkot - 360 024 (GUJARAT) INDIA.

**MANUFACTURER OF
EURO PROFILE
LOCK BODY & CYLINDER**

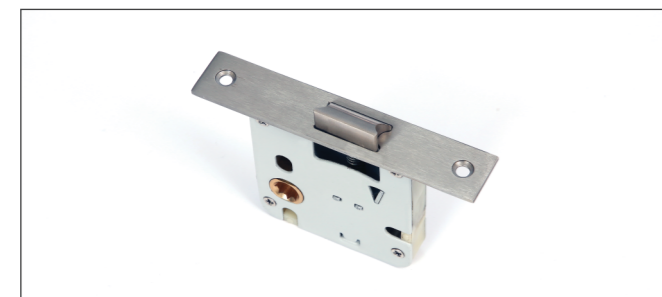
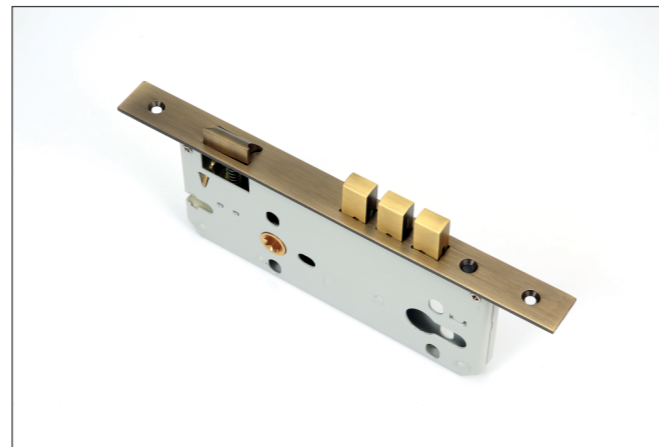
ABOUT US

Sukhkand is a subsidiary and a brand of a very prominent and well-known **Sumangal Group**, started its operation in the year 2015. We aim to provide key solutions. Having a profound vision to deliver the finest quality in Door Hardware Accessories; we provide Euro Profile Lock body and Cylinder. We took it as a challenge and inspired with "Make in India" initiative, today, **Sukhkand** has equipped the best in class Machinery & Equipment and Man Power to manufacture the Best Quality Euro Profile Lock Body and Cylinder. Expanding the reach across the states of India, presently we supply our products to giant manufacturers and dealers having strong chain established in India.

Adhering to **Sumangal Group's** Core Values, we successfully provided the best quality products from decades. We follow the same values and policies while manufacturing and designing door hardware products. We serve nearly every solution that fulfils the need of customers.

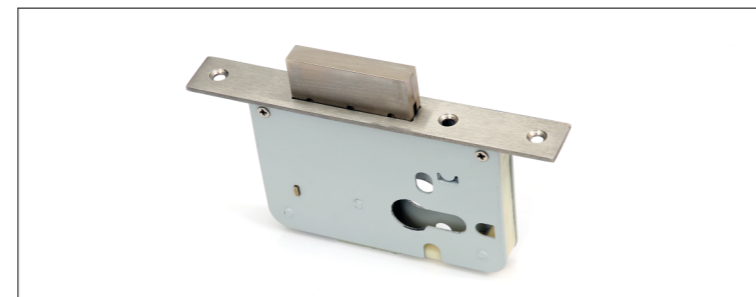
EURO PROFILE LOCK BODY

PRODUCT CODE	DESCRIPTION
MLB2404585B1	LOCK BODY (240x45x85 mm, Brass Solid Dead Bolt, Latch and Follower)
MLB2404585B3	LOCK BODY (240x45x85 mm, Brass 3 Pin Dead Bolt, Latch and Follower)
MLB2405085B1	LOCK BODY (240x50x85 mm, Brass Solid Dead Bolt, Latch and Follower)
MLB2405085B3	LOCK BODY (240x50x85 mm, Brass 3 Pin Dead Bolt, Latch and Follower)
MLB2406085B1	LOCK BODY (240x60x85 mm, Brass Solid Dead Bolt, Latch and Follower)
MLB2406085B3	LOCK BODY (240x60x85 mm, Brass 3 Pin Dead Bolt, Latch and Follower)



PRODUCT CODE	DESCRIPTION
MLBBLB1	BABY LATCH (Brass Latch and Follower)

PRODUCT CODE	DESCRIPTION
MLBDLB1	DEAD LOCK (Brass Dead Bolt)



PRODUCT CODE	DESCRIPTION
MLB2706085S4	LOCK BODY (270x60x85 mm, 4 Pin SS Round Bolt, Brass Latch and Follower)

FINISHES AVAILABLE: ■ ROSE GOLD ■ ANTIQUE BRASS ■ MATT BLACK ■ SS ■ CP

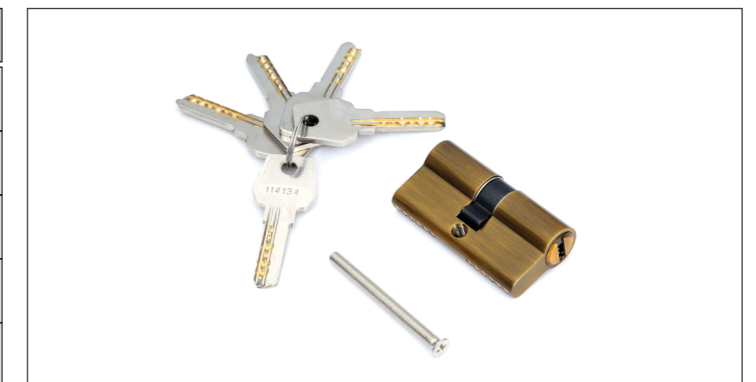
EURO PROFILE CYLINDER

PRODUCT CODE	DESCRIPTION
CYL60-1CSK-5C	Brass Cylinder 60mm 1 side Knob 1 Side Key with 5 Computer Key
CYL70-1CSK-5C	Brass Cylinder 70mm 1 side Knob 1 Side Key with 5 Computer Key
CYL80-1CSK-5C	Brass Cylinder 80mm 1 side Knob 1 Side Key with 5 Computer Key
CYL90-1CSK-5C	Brass Cylinder 90mm 1 side Knob 1 Side Key with 5 Computer Key
CYL100-1CSK-5C	Brass Cylinder 100mm 1 side Knob 1 Side Key with 5 Computer Key



PRODUCT CODE	DESCRIPTION
CYL60-BT-COIN	Brass Cylinder 60mm 1 side Knob 1 Side Coin
CYL70-BT-COIN	Brass Cylinder 70mm 1 side Knob 1 Side Coin
CYL80-BT-COIN	Brass Cylinder 80mm 1 side Knob 1 Side Coin
CYL90-BT-COIN	Brass Cylinder 90mm 1 side Knob 1 Side Coin
CYL100-BT-COIN	Brass Cylinder 100mm 1 side Knob 1 Side Coin

PRODUCT CODE	DESCRIPTION
CYL60-2CSK-5C	Brass Cylinder 60mm Both side Key with 5 Computer Key
CYL70-2CSK-5C	Brass Cylinder 70mm Both side Key with 5 Computer Key
CYL80-2CSK-5C	Brass Cylinder 80mm Both side Key with 5 Computer Key
CYL90-2CSK-5C	Brass Cylinder 90mm Both side Key with 5 Computer Key
CYL100-2CSK-5C	Brass Cylinder 100mm Both side Key with 5 Computer Key



PRODUCT CODE	DESCRIPTION
CYL60-HALF	Brass Cylinder 60mm Half
CYL70-HALF	Brass Cylinder 70mm Half

FINISHES AVAILABLE: ■ ROSE GOLD ■ ANTIQUE BRASS ■ MATT BLACK ■ SS ■ CP

FEATURES

Latch with The Security of Strong Deadbolts

Reversible Latch Bolt

Strong Double-Throw Deadbolt

Enclosed Body Construction

Attractive Finish

Rust Proof Coating

Our Lock Body and Cylinder Are 1 Lac Cycle Tested

*Finishes can be customised as per requirement