

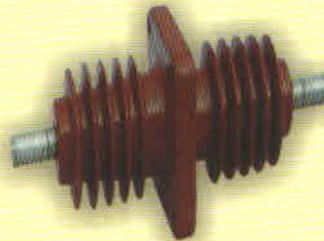
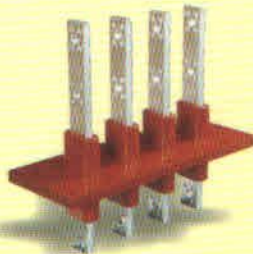
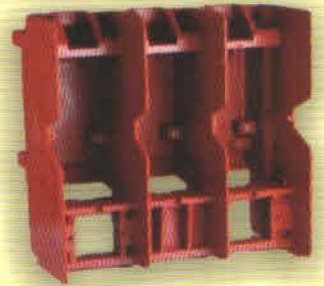


ISO 9001:2015 Certified Company



JAYA ELECTRICALS

Mfg. of Epoxy Casting D.M.C. Moulded Components,
11/33 KV Current, Voltage Transformer



Jaya Electricals was established in 2005 and is operating as an acclaimed manufacturer, exporter and supplier of Epoxy Cast Components, Epoxy Terminal Bushings, Epoxy Drive Insulators, HT Epoxy Cast Insulator, LT Epoxy Cast Insulators, Epoxy Bushing Board, Epoxy Cast Bushing, Epoxy Terminal Plate, Epoxy Ring Bushing, Epoxy Cast Bushing Shroud, Wall through Bushing, & Spout Bushing. Our product range has earned us loads of appreciation and it is inclusive of Switchgear Components, Post Insulators and Circuit Spouts. The offered products are extensively demanded in the electrical industry for their flawless performance, longer service life, seamless finish, resistance towards wear & tear, precise engineering and robust design.

Our procurement, manufacturing, production, quality testing, R&D, warehousing & packaging, Sales & Marketing departments are resourced with all the requisite amenities and handled by highly skilled professionals. Our infrastructural facility is state-of-the-art built and is divided into various departments. We have a vast production facility, which is equipped with innovative technology based machines for managing bulk orders conveniently. Our quality control laboratory is well-established and has access to a wide range of instruments for checking the quality of raw materials procured from our approved vendors and the manufactured goods as well. Our warehouse is spacious and systematic. It helps us in handling bulk orders in a comfortable manner. Our transportation facility is widespread and very fast. It has enabled us to make timely deliveries. We are backed by a team of professionals, which is skilled and hard working.

Quality Control & Testing Facilities:

We carry out all necessary in process and final tests as per IS quality procedure guideline. Right from purchase of raw materials till the supply of our final product, numerous tests are done to deliver best quality solutions for our customers.

Our testing engineers are well qualified and trained to perform all routine tests. All our products are type tested at NABL accredited lab at times as per customer requirement. Due to our stringent quality standards for production and testing, we can proudly say that after delivery failure of the product is almost a non-occurring event at Anjni Transformer & Switchgears.

Why Us ?

- Ability to meet bulk requirement
- adroit team of professionals
- Customization facility
- Realistic price structure
- Sophisticated infrastructural base
- Timely delivery
- Wide distribution network

"To satisfy our esteemed customers, understanding their changing needs, by providing timely delivery and quality products"



Vision

Creating wealth in form of cutting edge technology, patron customers, sustainable profit, passionate team and healthy environment



Mission

To create a world class organization, valued by customers



Goal

Be Industry leader in customer value

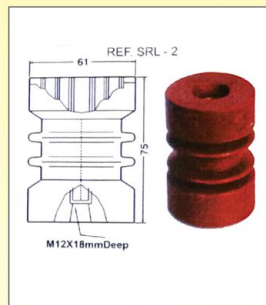


Values

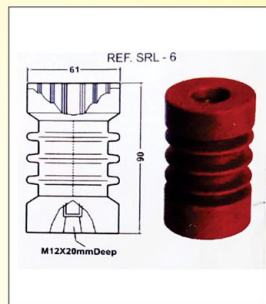
*Honesty
Respect
Transparency
Creativity*



Rating	3.3 KV
Shape	Cylindrical
Dia	61
Height	75
No. of Ribs	2
Brass Insert Sizes	M12x20, M10x20, M6x15,mm (2nos)
Material	Epoxy Resin Cast



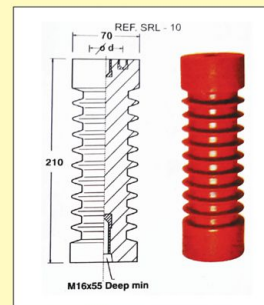
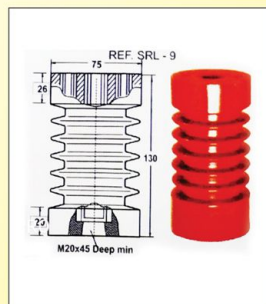
Rating	6.6 KV
Shape	Cylindrical
Dia	61
Height	90
No. of Ribs	3
Brass Insert Sizes	M12x20, M10x20, M6x15,mm (2nos)
Material	Epoxy Resin Cast



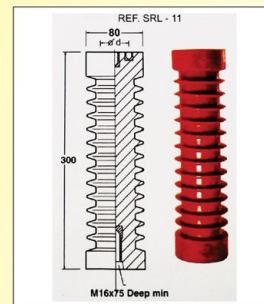
Rating	11 KV
Shape	Cylindrical
Dia	61
Height	130
No. of Ribs	5
Brass Insert Sizes	M16x40, M10x20, M6x15,mm (2nos)
Material	Epoxy Resin Cast



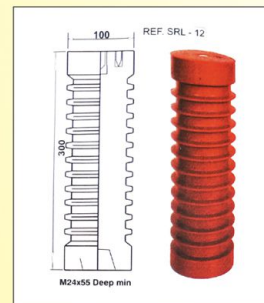
Rating	11 KV
Shape	Cylindrical
Dia	75
Height	130
No. of Ribs	5
Brass Insert Sizes	M20x40, M16x40, M10x20,mm (2nos)
Material	Epoxy Resin Cast



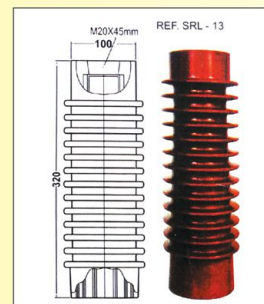
Rating	22 KV
Shape	Cylindrical
Dia	70
Height	210
No. of Ribs	9
Brass Insert Sizes	M20x40, M16x40, M10x20,mm (2nos)
Material	Epoxy Resin Cast



Rating	33 KV
Shape	Cylindrical
Dia	80
Height	300
No. of Ribs	12
Brass Insert Sizes	M20x45, M16x45, M10x20,mm (2nos)
Material	Epoxy Resin Cast

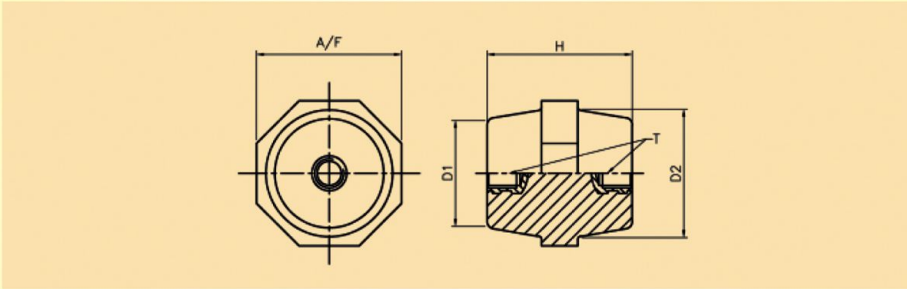


Rating	33 KV
Shape	Cylindrical
Dia	100
Height	300
No. of Ribs	11
Brass Insert Sizes	M20x45, M16x45, M10x25,mm (2nos)
Material	Epoxy Resin Cast



Rating	33 KV
Shape	Cylindrical
Dia	100
Height	320
No. of Ribs	13
Brass Insert Sizes	M20x45, M16x45, M10x25,mm (2nos)
Material	Epoxy Resin Cast

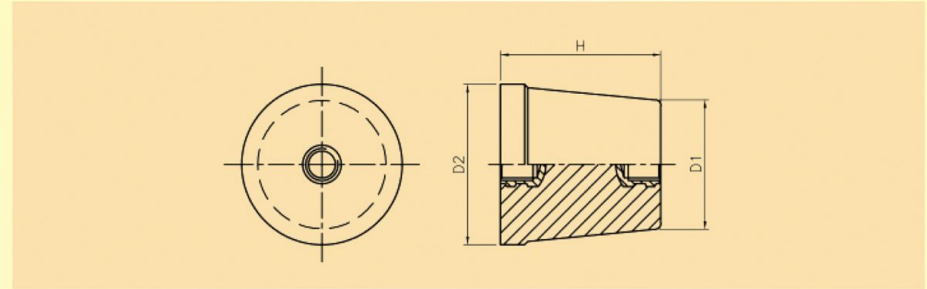
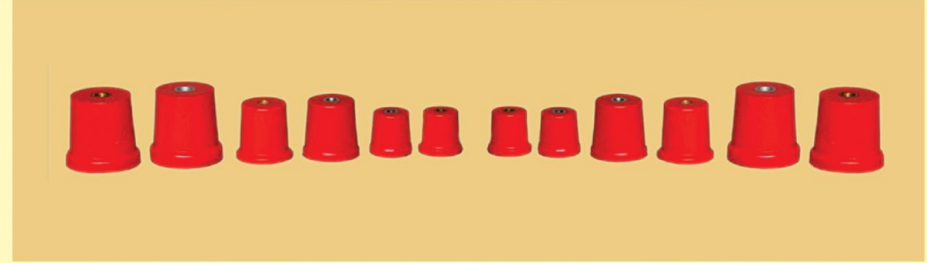
OCTAGONAL INSULATORS



DIMENSIONAL DATA												
ITEM NAME	ITEM CODE	D1	D2	H	A/F	F	INSERT		INSERT		Rated Voltage	Test Voltage (For 1 Min)
							T1	L1	T2	L2		
OCTAGONAL INSULATOR M4 X 14 HT	OCT0414	11	13	14	14	3	M4	5	M4	5	440 V	2 KV
OCTAGONAL INSULATOR M4 X 16 HT	OCT0416	13	15	16	16	4	M4	5	M4	5	440 V	2 KV
OCTAGONAL INSULATOR M5 X 20 HT	OCT0518	14	16	18	18	4	M5	7	M5	7	440 V	2 KV
OCTAGONAL INSULATOR M5 X 20 HT	OCT0520	13	16	20	19	5	M5	7	M5	7	440 V	2 KV
OCTAGONAL INSULATOR M6 X 25 HT	OCT0625	14	17	25	21	6	M6	9	M6	9	440 V	2 KV
OCTAGONAL INSULATOR M6 X 30 HT	OCT0630	21	27	30	32	8	M6	13	M6	13	440 V	2 KV
OCTAGONAL INSULATOR M8 X 35 HT	OCT0835	25	30	35	35	9	M8	13	M8	13	440 V	2 KV
OCTAGONAL INSULATOR M8 X 40 HT	OCT0740	30	35	40	40	10	M8	16	M8	16	440 V	2 KV
OCTAGONAL INSULATOR M10 X 45 HT	OCT1045	29	33	45	40	10	M10	16	M10	16	440 V	2 KV
OCTAGONAL INSULATOR M10 X 50 HT	OCT1050	32	37	50	44	10	M10	20	M10	20	440 V	2 KV
OCTAGONAL INSULATOR M12 X 55 HT	OCT1255	38	44	55	50	11	M12	18	M12	18	440 V	2 KV
OCTAGONAL INSULATOR M12 X 60 HT	OCT1260	39	45	60	55	12	M12	25	M12	25	600 V	2 KV
OCTAGONAL INSULATOR M12 X 65 HT	OCT1265	39	46	65	56	12	M12	25	M12	25	600 V	2 KV
OCTAGONAL INSULATOR M12 X 70 HT	OCT1270	42	50	70	60	13	M12	25	M12	25	600 V	2 KV
OCTAGONAL INSULATOR M12 X 75 HT	OCT1275	35	45	75	64	19	M12	25	M12	25	600 V	2 KV
OCTAGONAL INSULATOR 30 HT A/F 40	OCT103040	35	37	30	40	8	M10	12	M10	12	600 V	2 KV

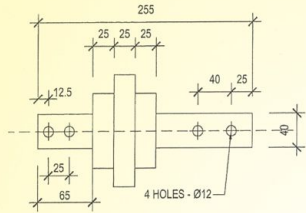
* Insert sizes could also be varied to suit customer requirement

CONICAL INSULATORS

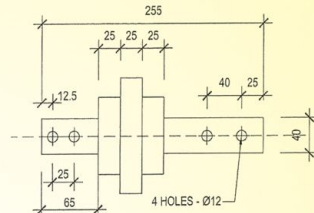


DIMENSIONAL DATA												
ITEM NAME	ITEM CODE	D1	D2	H	F	INSERT		INSERT		Rated Voltage	Test Voltage (For 1 Min)	
						T1	L1	T2	L2			
CONICAL INSULATOR M5 X 20 HT	CON0520	15	24	20	3	M6	7	M6	7	440 V	2 KV	
CONICAL INSULATOR M6 X 25 HT	CON0625	18	25	25	5	M6	7	M6	7	440 V	2 KV	
CONICAL INSULATOR M6 X 30 HT	CON0630	20	30	30	6	M6	10	M6	10	440 V	2 KV	
CONICAL INSULATOR M8 X 35 HT	CON0835	21	32	35	4	M8	11	M8	11	440 V	2 KV	
CONICAL INSULATOR M8 X 40 HT	CON0840	32	40	40	6	M8	16	M8	16	440 V	2 KV	
CONICAL INSULATOR M10 X 45 HT	CON1045	30	45	45	5	M10	16	M10	16	440 V	2 KV	
CONICAL INSULATOR M10 X 50 HT	CON1050	38	50	50	10	M10	20	M10	20	440 V	2 KV	
CONICAL INSULATOR M10 X 55 HT	CON1055	33	50	55	5	M10	20	M10	20	440 V	2 KV	
CONICAL INSULATOR M12 X 60 HT	CON1260	39	50	60	10	M12	25	M12	25	600 V	2 KV	
CONICAL INSULATOR M12 X 70 HT	CON1270	38	50	70	10	M12	25	M12	25	600 V	2 KV	

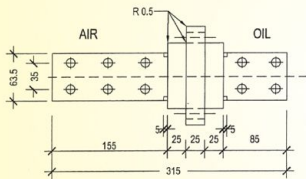
* Insert sizes could also be varied to suit customer requirement



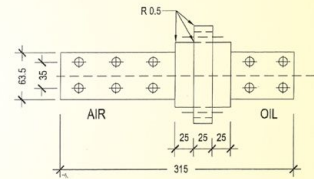
1.1KV 630A



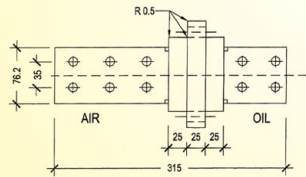
1.1KV 1000A



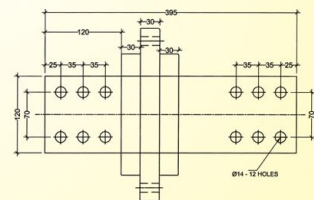
1.1KV 1400A



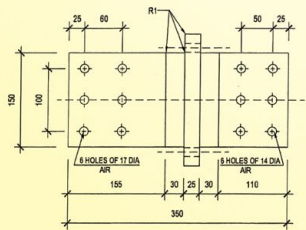
1.1KV 2000A



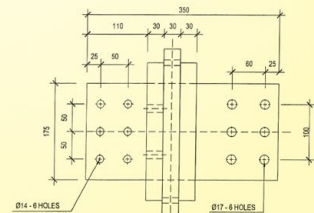
1.1KV 3150A



1.1KV 4000A



1.1KV 5000A



1.1KV 6300A



HT BUSHING (BUSBAR TYPE)



HT BUSHING



SHROUD BUSHING



ISO HOUSING BUSHING



RMU BUSHING



WALL THROUGH BUSHING



MONO BLOCK



MOTOR TERMINAL



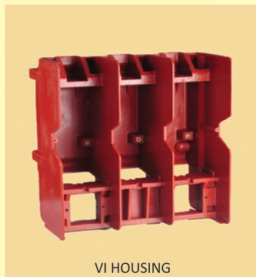
TERMINAL PLATE



SEC TERMINAL 6 MM



SEC TERMINAL 8 MM



VI HOUSING



POLE HOUSING



ENVELOPE BUSHING



CONDUCT BUSHING



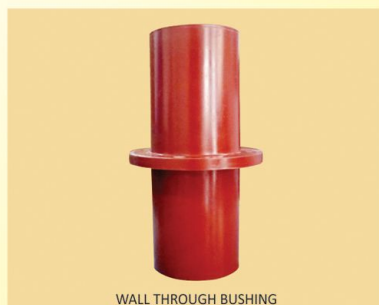
ENVELOPE FOR SF6 GAS



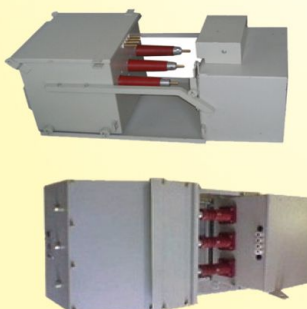
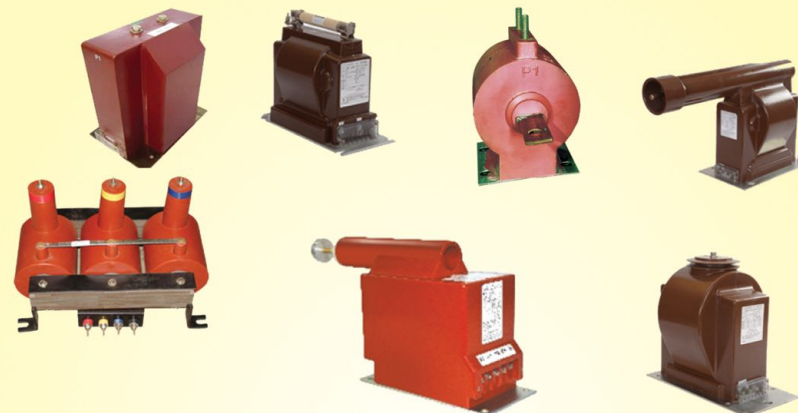
11KV EPOXY



500 VA LOWER BUSHINGS



WALL THROUGH BUSHING



- **300 Models**
- **Custom Design**

- Complying and type tested to latest International IEC, ANSI, AS, DIN, GOST, JIS
Metering, Relaying, Special protection class
3.3 kV 3.6/10/20kVp up to 33 kV
36/70/170-200 kVp
Traceable routine test result on web
- Consistent performance; proven with utility, Industry and Power projects



JAYA ELECTRICALS

Mfg. of Epoxy Casting D.M.C. Moulded Components,
11/33 KV Current, Voltage Transformer



G-99, G-262 & F-656, M.G. Road, Industrial Area, UPSIDC, Ghaziabad - 201015 (U.P.)
E-mail: jayaelectricals2005@gmail.com | Website: www.anjnictpt.com | Mobile : 9012184692 / 9769554485